

AHS Capstone Presentation:
PSYC 311 Environmental
Psychology

December 13, 2007
Conor Frackleton

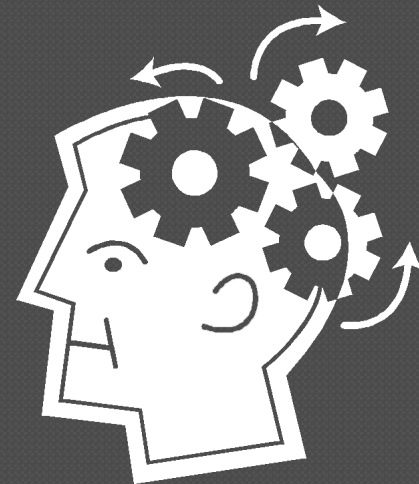
Agenda

- ◎ Concentration Courses
- ◎ Capstone Course
- ◎ PSYC 311 – Project
- ◎ Reflections

Concentration Courses

◎ PSYC 101 – Introduction to Psychology

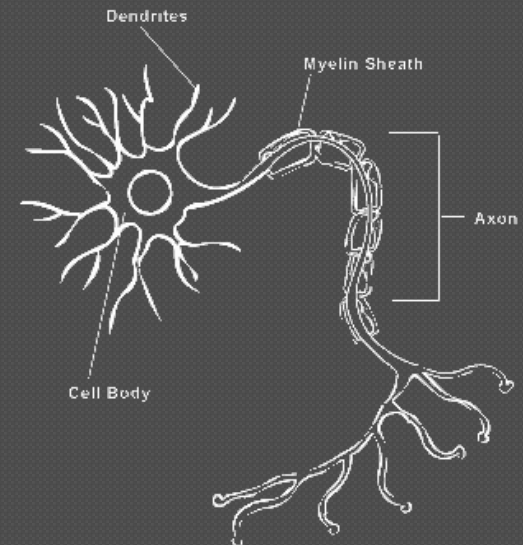
- Introduction to major psychology subfields
 - Developmental
 - Clinical
 - Cognitive
 - Social
 - Personality



Concentration Courses

◎ PSYC 219 – Biological Psychology

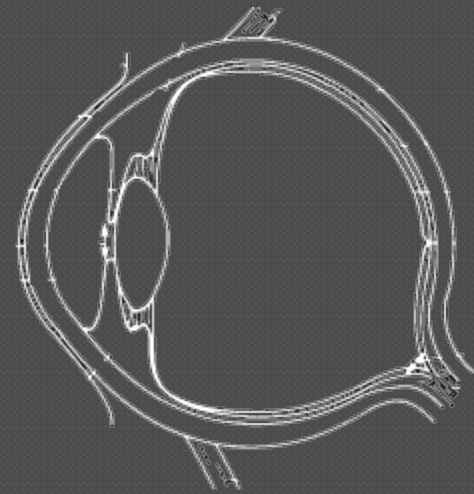
- Introduction to the biological bases of behavior
 - Structure and function of nervous system
 - Sensory processing
 - Sleep
 - Reproductive behavior
 - Mental disorders



Concentration Courses

◎ PSYC 218 – Sensation and Perception

- Survey of the human senses from stimulus to perception
 - Vision – color, form, orientation, size
 - Effects of experience and development
 - Audition
 - Olfaction
 - Taste
 - Touch



Capstone Course

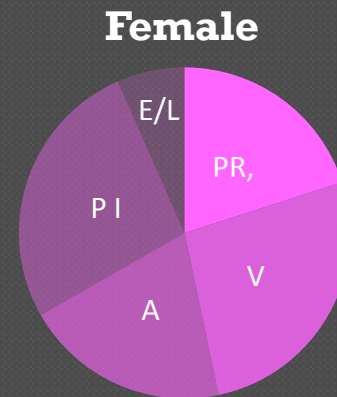
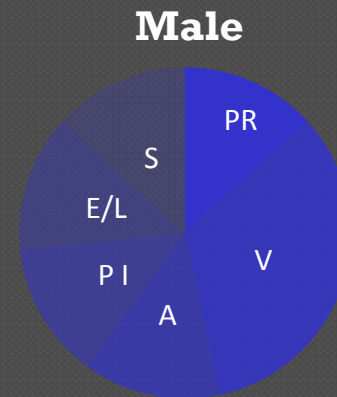
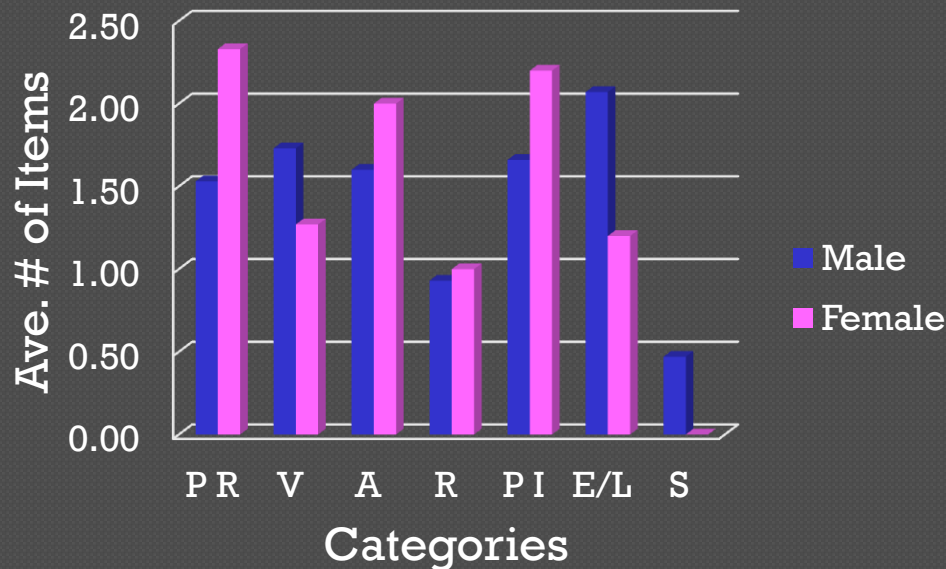
◎ PSYC 311 – Environmental Psychology

- Exploration of interaction between the physical environment and one's behavior and feelings
- Topics include:
 - Territoriality
 - Personal space
 - Crowding



PSYC 311 - Project

Gender differences in dorm room personalization



Reflections

- ◎ It is important to consider faculty when choosing courses.
- ◎ Social psychology is generally scheduled during MechE courses.
- ◎ Psychology research can benefit greatly from improving technology.
- ◎ Applying fundamentals of psychology to design improves user interactions.
- ◎ Psychology is fun.

Questions

